



Circuit Board Replacement Installation Instructions

Before performing any maintenance work, ensure that power to the unit is switched off and the system is locked out.

Prior to installing the new circuit board, the old board must be properly removed by the following procedure:

Tools Required:

- 1/2" Wrench
- Phillips Head Screwdriver

Removal:

1. Remove the (14) 5/16" bolts that secure the cover using 1/2" wrench.
2. Disconnect Integrity Ground cable from terminal P3 and clamp cable from terminal P2.
3. Disconnect power supply from terminals 1 and 2.
4. Disconnect lamp wires from terminals 2, 3 and 4 (faston terminals 2R, 4R, 2G and 3G, if applicable).
5. Disconnect all connections from terminals 5-10, if applicable.
6. Unscrew the 4 corner screws securing the electrical board and carefully remove board.

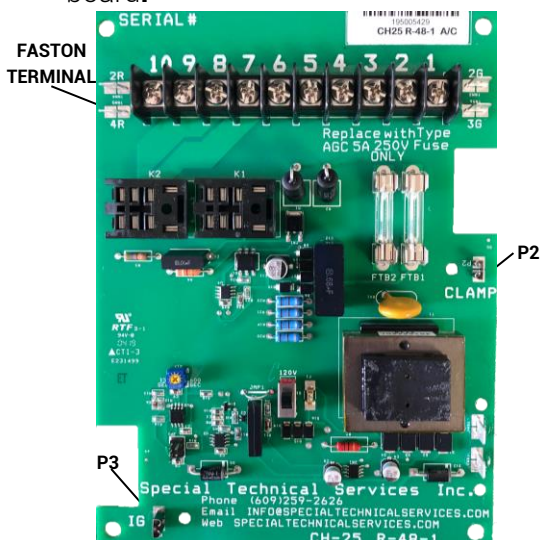


Figure 1:
Circuit Board

Installation:

1. Gently place new circuit board into the enclosure and secure with the 4 corner screws.
2. Connect ground cable to terminal P3 and clamp cable to terminal P2.
3. Connect the power supply to terminals 1 and 2.
4. Connect white wires from lamps to terminal 2 (faston terminal 2R for red light and 2G for green, if applicable).
5. Connect black wire from red lamp to terminal 4 (faston 4R, if applicable).
6. Connect black wire from green lamp to terminal 3 (faston 3G, if applicable).
7. Reconnect all connections to terminals 5-10 as necessary, following the chart in Figure 2.
8. Replace cover and secure using (14) 5/16" bolts. Tighten to 11 ft-lbs using 1/2" wrench.

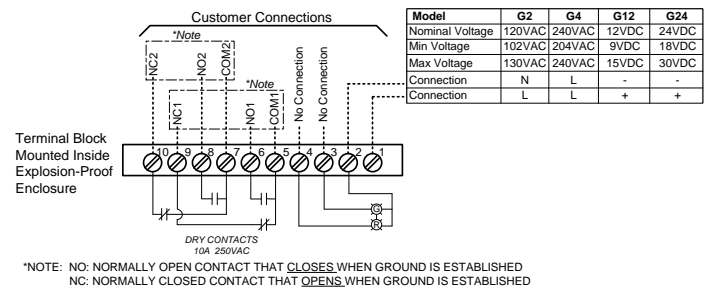


Figure 2:
Terminal Block Diagram